

# 5G PHANTOM ANTENNAS

## Trusted

#1 leading brand of 'salt-shaker' style omni antennas for 20 years

## The 5G Family

What is included?



## Warranty

Leading 5-year warranty provided on all antennas



## Key Features



Rugged construction and reliable build quality



Optimized gain at just above the horizon for superior connectivity



Great circular gain with minimal ripple providing less nulls/dead spots



Over 80% average efficiency for reliable connectivity when you need it most

## FAQs

**Q:** Can they be used outside? **A:** Yes, they are IP67 and UL94 flammability rated and suitable for both indoor and outdoor environments.

**Q:** Why is a no ground plane antenna important? **A:** When mounting on areas with a small metal or non-metal surface, an antenna that is designed for on-metal/on ground may shift frequency, resulting in poor/zero signal transmission. No ground plane versions solve this issue.

**Q:** For the On Ground antenna, how big does the ground plane need to be? **A:** The antennas will work on any ground plane but we recommend an area of at least 2 feet around the center.

**Q:** How close to each other can 5G Phantoms be sited? **A:** Although interference is minimal, we would recommend no closer than 1 feet apart.

**Q:** Is there a difference in size between the 617 and 698 MHz models? **A:** Yes, the 617 MHz models are approximately 10% taller due to the increased wavelength.

**Q:** Is there an NMO mount version? **A:** Not currently. We recommend using the direct mount with integrated N-connector which avoids RF losses at high frequencies due to its impedance matching coaxial interface.

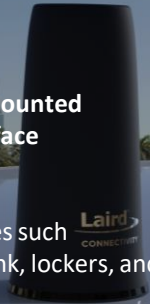
## On Ground Plane

617-7125 MHz  
698-7125 MHz

Does need to be mounted on a reflective surface

### Applications

On metallic surfaces such as vehicle roof/trunk, lockers, and enclosures



## No Ground Plane

617-7125 MHz  
698-7125 MHz

Does not need to be mounted on a reflective surface

### Applications

Vehicles or enclosure with fiberglass/plastic surface

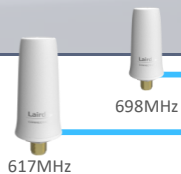


### Four On Ground Plane Models Available:

617-7125 MHz – Black or White: Available Oct '21  
698-7125 MHz Black or White : Available Oct '21

### Four No Ground Plane Models Available:

617-7125 MHz – Black or White: Available Q4 '21  
698-7125 MHz - Black or White : Available Q4 '21



698MHz

617MHz



Coverage of Existing or Allocated Bands

Coverage of Emerging Bands

7125MHz

