

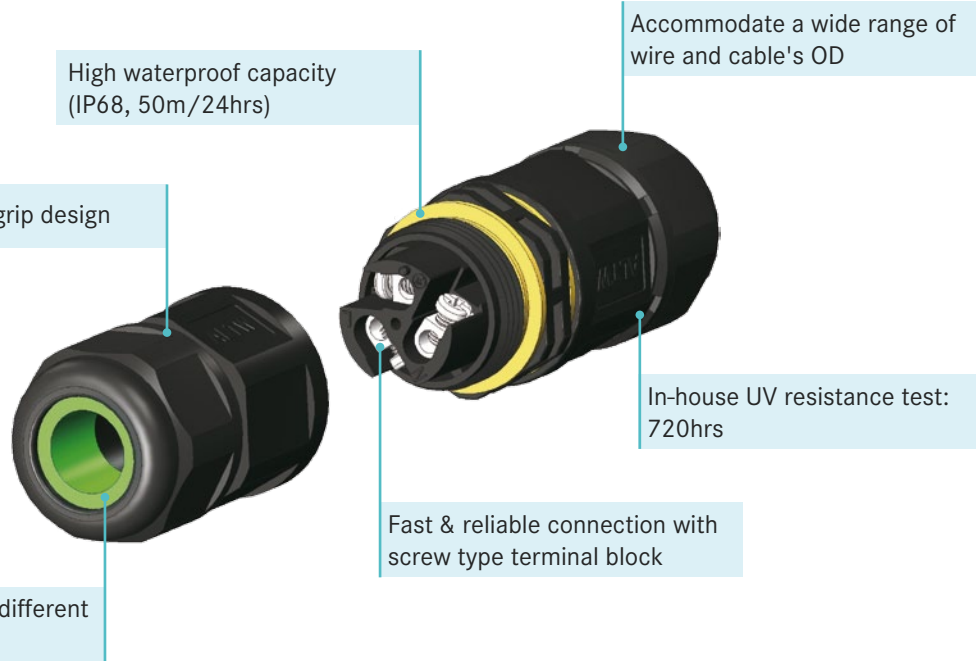
# Amphenol LTW IP68 FICX Series - Simple & Reliable Cable Interconnections

Amphenol LTW introduces cable joiner, FICX series, for installers to make the cable interconnections simple and reliable in field. Designed with screw type terminal block, the FICX series provides a cost-saving wiring system, ensuring error-proof and time reduction.

Met IP68 waterproof protection and exposed to 720 hours for UV resistance test, the FICX series is fit for either indoor or outdoor wet locations, enhancing your installation quality. With wide range of connectors: in-line and T-shaped cable joiner, the FICX series is available to accommodate various cable OD and wire sizes as your quick-connecting solutions.



## Product Features :



## Applications :



Marine Electronics /  
Cruise / Shipyards



LED Lighting



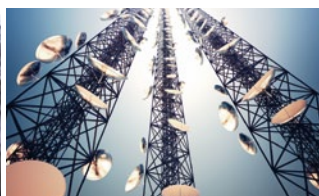
Renewable Energy



IP CCTV & Security



Industrial Automation /  
Factory Automation



Outdoor Broadband  
Wireless Access



MRT



Aerospace / Automotive /  
Commercial Vehicles

and more ...

Innovation in Waterproof Solution

\* Design and specifications are subject to change without notice.

**I Tube PG11**

Terminal Block Housing:  
Screw Type



**I Tube PG12**

Terminal Block Housing:  
End Barrier Screw Type



**XI Tube PG13**

Terminal Block Housing:  
End Barrier Screw Type



**T Tube PGT2**

Terminal Block Housing:  
Screw Type



**Specifications**

**General Specification**

Number of Positions	2P, 3P & 4P
Current Rating	PG11: 20A for 2P, 3P & 4P PG12, PG13 & PGT2: 20A for 2P & 3P, 15A for 4P
Voltage Rating	450Vac/dc
Waterproof Rating	IP68 (50m, 24hrs)
Operating Temperature	-40°C~ 105°C
Wire Section	14~18 AWG (0.75~2.5mm)
Cable OD (Seal Color)	<ul style="list-style-type: none"> <li>● (BL) 4.5~6.5mm</li> <li>● (YW) 6.6~8.5mm</li> <li>● (GN) 8.6~10.5mm</li> <li>● (RD) 10.6~12.5mm (PG11/T2) 10.6~11.5mm (PG12/13)</li> </ul>
Recommended Torque	<ul style="list-style-type: none"> <li>▪ Screws for wire connection: PG11 &amp; PGT2: 1.29~2.3Kgf.cm PG12 &amp; PG13: 1.29~2.5Kgf.cm</li> <li>▪ Gland tightening: 6~8Kgf.cm</li> </ul>

**Technical Characteristics - Electrical**

Insulation Resistance	100 MΩ Min. at 500Vdc ± 10%
-----------------------	-----------------------------

**Environmental Conditions and Performance**

Damp Heat, Cyclic	5 Cycles (-40°C to 105°C, 80~98% HR for 24 hours per cycle)
-------------------	---

**Material Specification**

Gland Nut	PA6+GF, Black
Gasket (PG11 & PGT2)	Silicone, Yellow
Gland Body (PG12 & PG13)	PA66, Black
L-Gasket	Silicone, Yellow
Seal	Silicone
Gland Pipe	PA66, Black
Terminal Block Housing	PA66+GF, Black
Contact	Brass, Nickel-Plated
Screw	Stainless Steel

For more information, please contact:  
Luc Kan | Sales & Marketing | Email: luc@ltw-tech.com

Amphenol LTW Technology Co., Ltd | 5F-3, No.51, Sec.4, Zhongyang Rd., Tucheng Dist., New Taipei City 23675, Taiwan  
Telephone: +886-2-7741-6888 | Fax: +886-2-7741-6999 | <http://www.amphenolltw.com>

